

**HEE North West
Spring Educators Conference
May 2022**

A large, stylized orange bracket that spans across the width of the slide, positioned below the event title.

**Challenges and opportunities
of transition and integration**

Developing people

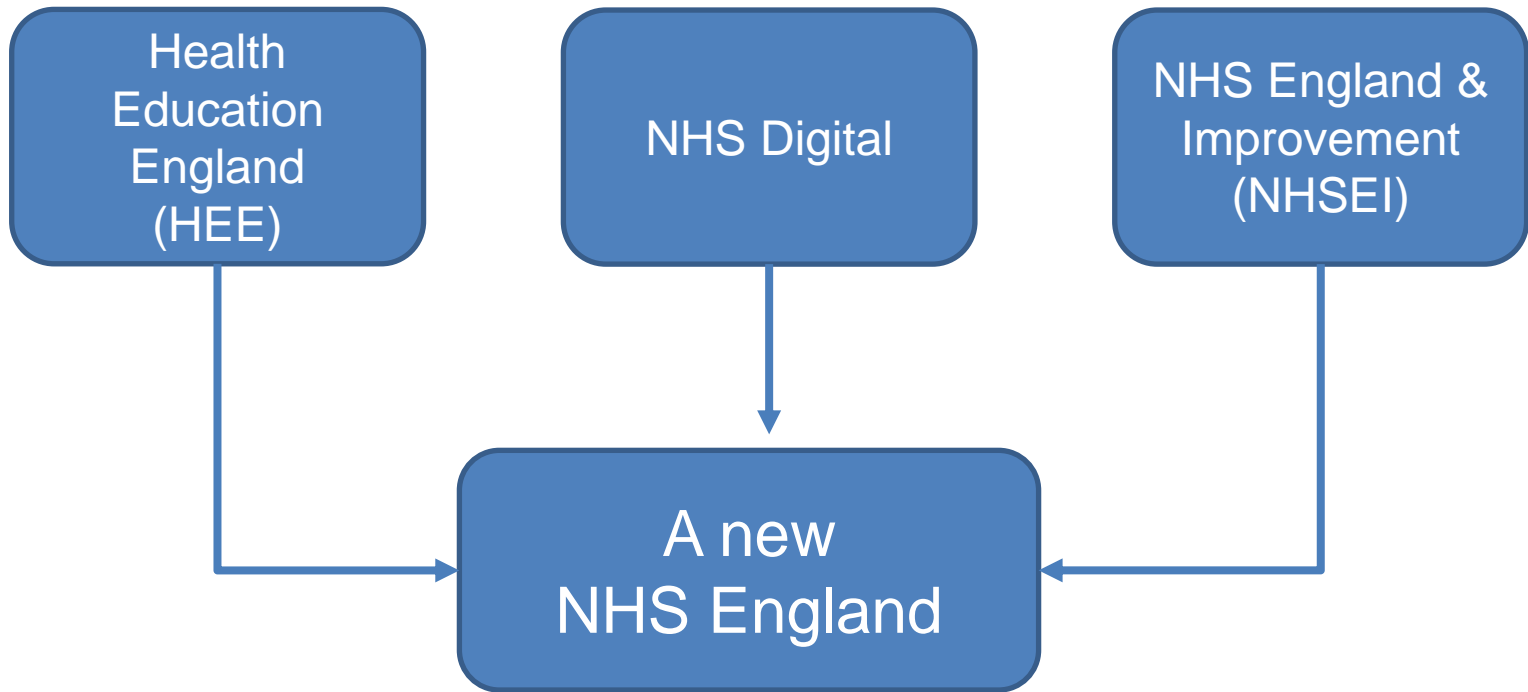
for health and

healthcare

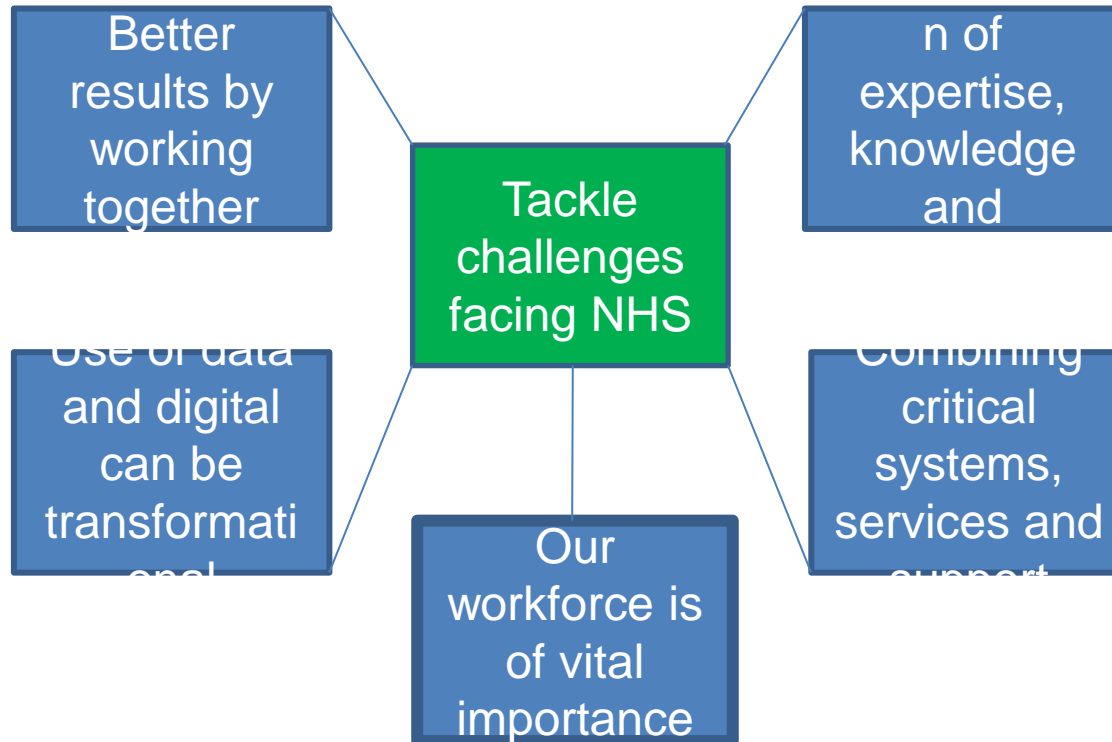
www.hee.nhs.uk

A horizontal orange bar at the bottom of the slide, with a decorative bracket-like shape on the right side.

The New Organisation - Who

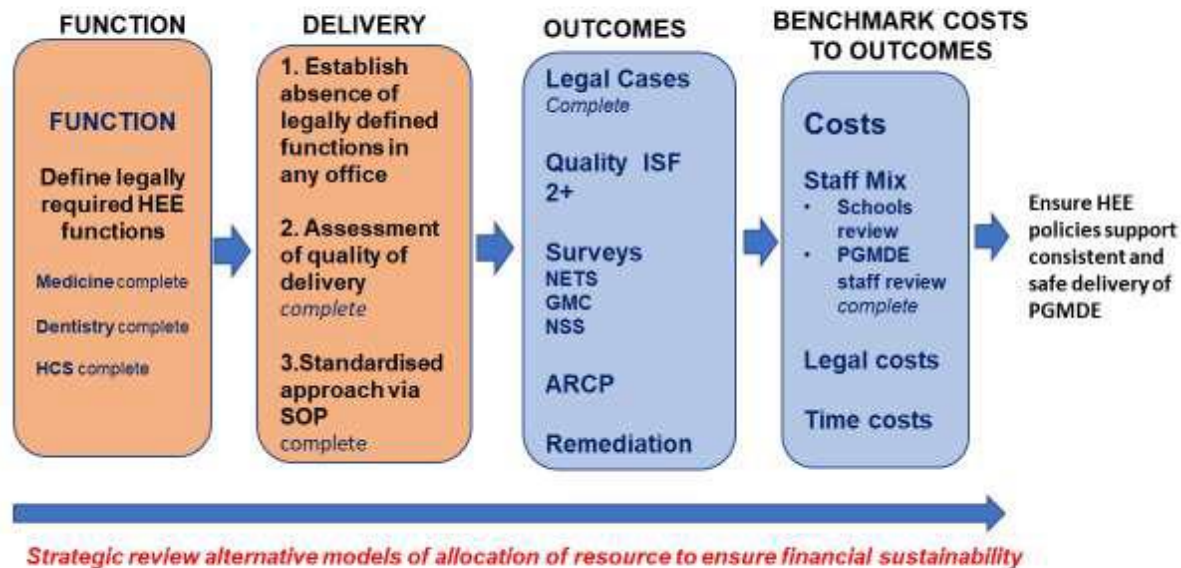


The New Organisation - Aim



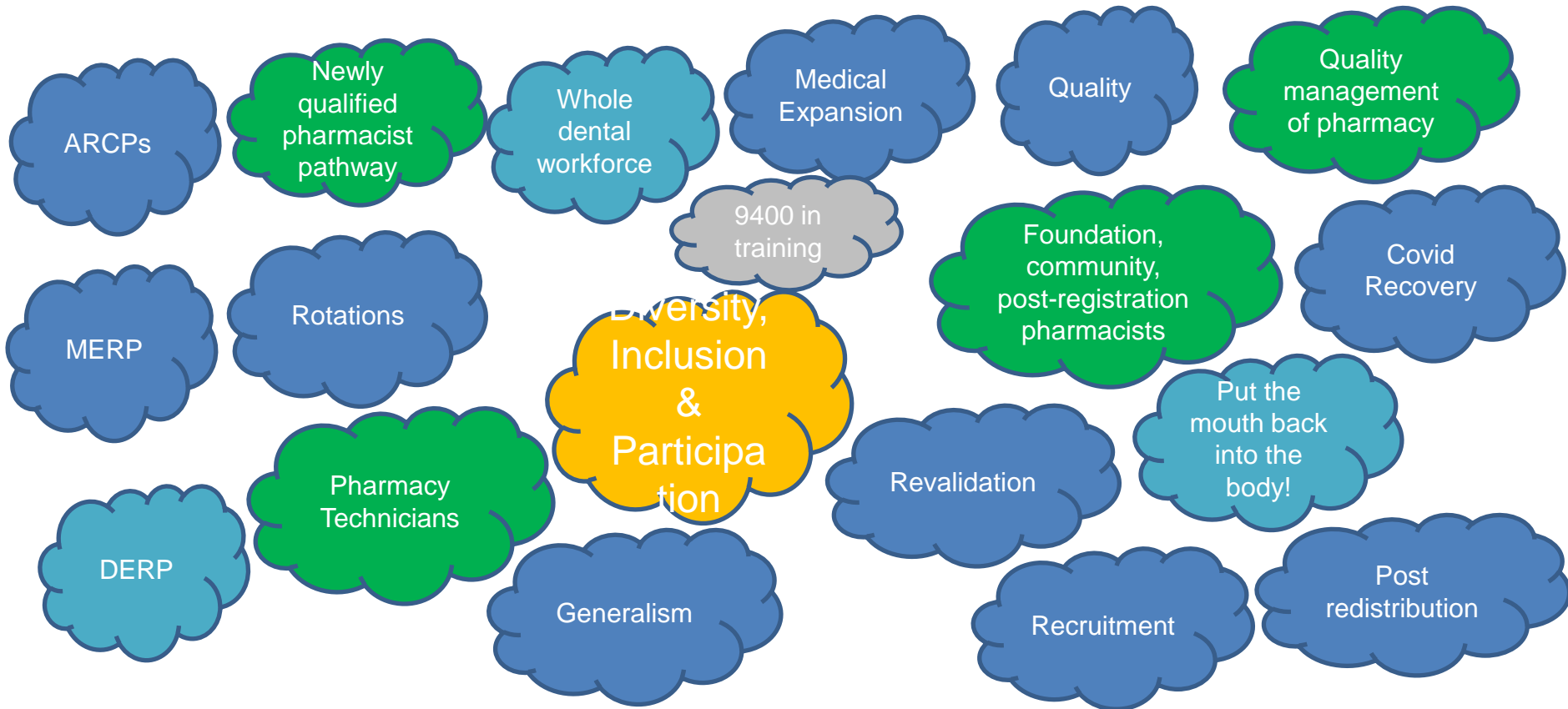
PGMDE Review

HEE PGMDE sustainability review group work plan



Training Programme Management

Health Education England



Challenges

- Maintaining Core business, statutory and regulatory functions
- Training recovery and reform
- National projects – Enhanced (Generalism), LTFTT.
- PGDME reform & Education Support allocations
- Meeting recruitment, expansion and redistribution requirements
- Management of COVID curriculum derogations into 2022

Unique function of PGMDE

- “Deanery” function is unique and likely to be the driver for training education arm of NHSE/I
- Opportunity to lead the agenda and shape the changes
- Redistribution work could enable more evidence-based approach to workforce focused on need/deprivation etc. across ICBs
- **Evolving into a Multi-professional Workforce Deanery**

Highlights

- ARCPs done and trainees to CCT.
- Revalidation backlog cleared with recommendations aligned to CCT
- PGMDE regarded externally as important and valued stakeholder.
- Feedback from HM Coroner on integrity of TRES and ROAG process
- Outstanding legal cases resolved just one remaining (legacy case Jan 2011!)
- GG9 launch 3/8/22 – much of the work builds on best practice exemplars from NW.



- **The pessimist complains about the wind**
- **The optimist expects it to change**
- **The leader adjust the sails**

John Maxwell

A New dawn & lots to celebrate

