

KNOWSLEY PUBLIC HEALTH SPECIALITY REGISTRAR TRAINING PROSPECTUS

JANUARY 2025

WHY SHOULD I CONSIDER KNOWSLEY AS A TRAINING PLACEMENT?



- Knowsley Registrars are **well-supported** to positively impact population health and wellbeing, influence policy and address inequalities within the borough. Dependent on competency requirements, opportunities exist for registrars across **all aspects of public health** including healthcare public health, health protection, intelligence, commissioning, health improvement and wider determinants.
- **Registrars are an important part of the Public Health Team!** With lots of experience in supervising projects and programmes, the Knowsley Senior Team recognises how important it is that registrars **have co-developed work plans aligned to learning needs** and interest.
- The Public Health Team has a **strong and well-established relationship with the wider Council and other local partners**, providing valuable insights into working in a political environment, as well as working closely with NHS, social care, housing and community colleagues.
- Knowsley Council was recently named as the **United Kingdom's "Local Authority of the Year"** in the Municipal Journal Awards. The Council also delivers a **truly unique and engaging induction programme** for all new team members that supports trainees to understand how their role fits into wider organisational priorities and to learn about culture, standards and key policies.

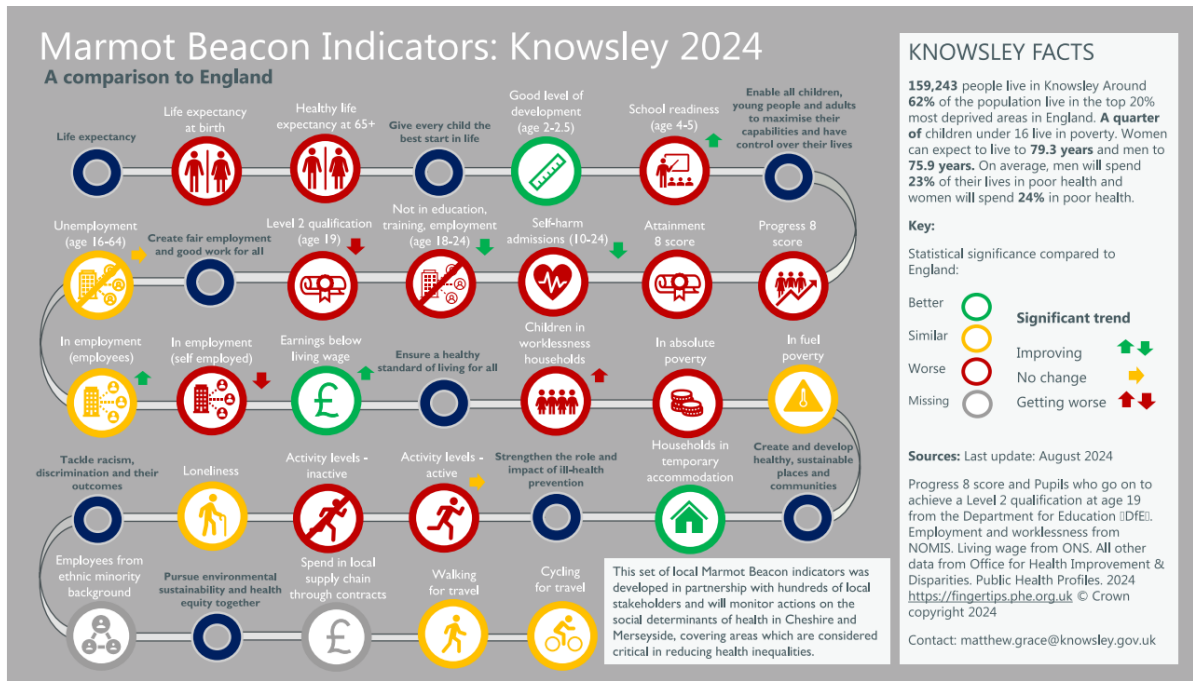


Knowsley is a relatively **small Local Authority in North-West England**, covering an area of 33 square miles. It has a resident population of approximately 159,243 and is situated just to the East of Liverpool, within easy reach of the rest of Merseyside, Cheshire and Manchester.

Knowsley's topography, and its motorway, combine to create a natural segregation between employment and housing areas, and clear definition between urban communities. **The borough comprises a belt of large suburban towns and villages: Huyton, Kirkby, Prescot, Whiston and Halewood.** The countryside and urban fringe areas of Knowsley are designated as green belt, much of which is high grade farmland. The borough has a wide variety of public open spaces, with the largest of the borough's parks forming an integral part of the **Mersey Forest**, where thousands of trees have been planted to create attractive urban woodland. Over the years Knowsley has established strong green credentials, recognised through multiple awards for excellence for its parks and open spaces, and environment. It's also the home of the **National Wildflower Centre at Roby (Huyton)** - a seasonal visitor attraction dedicated to creative conservatism, education and botanical research - and **Knowsley Safari Park** (within the historic Knowsley Hall Estate), which receives over half a million visitors per year.

In recent years extensive progress has been made towards town centre regeneration plans, with the construction and opening of a retail development in Kirkby, more shop front improvements and food /drink outlets opening in Huyton Village Centre and the incredible **Shakespeare North Playhouse** opening in Prescot.

Knowsley is the **second most deprived local authority in England**, meaning that our local population has been particularly affected by the current cost-of-living crisis. **Life expectancy in Knowsley is significantly lower than England** for both males and females. The latest data for 2022 for Knowsley shows the average life expectancy for males is 76.6, this is 2.7 years lower than England which is 79.3. For females for the same year for Knowsley it is 80.5, this is also 2.7 years lower than England. Deprivation affects life expectancy and there are **large differences between the least and most deprived areas of the borough.** In 2020-21 the male life expectancy of the most deprived 20% of Knowsley was 70.9 years, this is 8.9 years lower than the 20% least deprived which was 79.8 years. There is a similar gap for females with the most deprived 20% at 75.1 years, this being 8.4 years lower than the 20% least deprived which was 83.4 years. Knowsley was disproportionately affected by the Covid-19 pandemic, with the second highest case rate in England. Other notable characteristics of the borough's resident population include its comparatively small Non-White Ethnic population, representing only around 3% of residents; a higher-than-average proportion of lone parent households, which are particularly concentrated in the Kirkby area; and a relatively low proportion of single person households.



With such challenges comes a **real opportunity to improve the lives of local populations exposed to significant structural inequalities** – excitingly the Public Health team has a core role in driving such change! The Knowsley Better Together partnership developed the **Knowsley 2030 Strategy**, which is a long-term plan to address inequalities and support residents and communities to thrive.

Health and wellbeing are corporate priorities in Knowsley, with a shared ambition that Knowsley becomes a place where people are active and healthy and have access to the support they need to thrive. The Council and the Public Health Team work well with a range of other departments and partners on improving such outcomes. Being a relatively small council creates **strong working relationships** to facilitate this. Knowsley also has a history of **strong public and partnership collaboration**. Through enabling community and voluntary networks, public health issues have a very high profile. Being a smaller borough allows us to focus on relationships with our partners, including our NHS partners. We are coterminous with Knowsley NHS Place.

Our most recent Joint Strategic Needs Assessment is available [here](#).

Our 2030 Evidence Base can be found [here](#) and the 2030 Strategy [here](#).

WHAT DO OTHER REGISTRARS SAY ABOUT TRAINING AT KNOWSLEY?

Gathering feedback and insight about placement experience from our trainees is important to ensure that we continue to deliver a positive learning environment. Our most recent trainees have provided the following information about their time in the Knowsley Public Health Team:

“When I joined the Public Health team at Knowsley Council, I was met with a warm welcome and instantly felt like part of the team. Prior to joining, I discussed my outstanding Learning Outcomes with my supervisor, and they

ensured my pieces of work aligned exactly. As an ST3/ST4, I feel I have been given the opportunity to lead on project areas but still had the support from my supervisors and wider PH team who have always been happy to share their wealth of knowledge and experience when I've needed it. My supervisors have been a great support throughout, helping with preparation and conducting practice scenarios for my MFPH exam and with regular meetings to discuss project areas. I would recommend Knowsley to peers as great training location, with its friendly and welcoming atmosphere and a wide range of interesting challenges and opportunities."

"Knowsley Council is a brilliant place to work as an SpR. The team are not only welcoming, helpful, and extremely knowledgeable but they are also great fun to be around. Alongside this great atmosphere, Knowsley offers rare opportunities to work in the forefront of innovative projects due to the team's creative problem-solving nature. I joined the team as an ST1 and was given a substantial amount of guidance and direction from all team members. My supervisors have also been really supportive not just with work in relation to Knowsley but also with the MPH and DFPH exam."

Our current Registrar – Jessica Smith, ST3 – is happy to be contacted with any questions about her experience training with us at Jessica.smith166@nhs.net

WHAT WORK HAVE REGISTRARS BEEN INVOLVED IN?

The Knowsley Public Health team are involved and/or leading a wide variety of work – there are lots of different opportunities to get involved in varied work. Recent trainee projects have included leadership of the smoking and vaping strategy and action plan for Knowsley, commissioning of oral health interventions, a review of the pathway from drug and alcohol services to employment support, as well as an evaluation of the Health and Wellbeing strategy for 2020-2025.

CAN YOU TELL ME ABOUT THE PRACTICALITIES OF TRAINING AT KNOWSLEY?

The Knowsley Public Health Team comprises of the Director of Public Health, 2 Public Health Consultants, 3 Programme Managers and 4 Officers. The team also includes Intelligence Analysts who are part of the Council's Policy and Performance team, and a Public Health and Early Years Integration Co-Ordinator. Public health commissioning is part of the Council's wider Whole Life Commissioning team. The Public Health team sits within **the Health and Social Care Directorate**.

Specialty Registrars are physically located with the friendly public health team. All Registrars are treated as members of the Public Health Team and will be allocated their own laptop and phone, if required, with **access to flexible and remote working** around business needs. The Knowsley Public Health Team base is the Council Office, Municipal Building, Archway Road in Huyton. This is close to Huyton Town Centre. There is free long-stay parking near the office. Secure cycle stores outside the office building are also available with changing facilities. The railway station is a 5-

minute walk away and there are good road and public transport links. The council has **hybrid working, with the team usually coming together for shared office days – currently Tuesdays.**

Specialty Registrars are offered support throughout their placements with dedicated **one-to-one meetings with their educational supervisor.** Registrars are highly respected members of the team and are encouraged to participate in **monthly team meetings,** Public Health Strategy Group meetings and relevant Council and Partnership meetings. Senior Specialty Registrars can also attend Leadership meetings within the wider portfolio of the DPH. Specialty Registrars are encouraged to participate fully in the development opportunities offered via the School of Public Health.

WHO ARE THE ACCREDITED TRAINERS AT KNOWSLEY?

Knowsley has 3 accredited trainers with varied portfolios and experience:



Dr Sarah McNulty, Director of Public Health

Sarah leads the team and is the Council's statutory officer. Public Health sits within the Health and Social Care Directorate within the Council but there are well established, effective working relationships across all directorates and strong political support. Sarah is the Cheshire and Merseyside Lead DPH for Smokefree and CVD.



Richard Holford, Public Health Consultant

Rich's portfolio includes social determinants of health, public mental health, health improvement, reducing health inequalities and the Health and Wellbeing Board. He also leads public health service planning, workforce development, research, intelligence and performance. Rich has over 20 years' experience working in public health, becoming a consultant via the Specialist portfolio route.



Beth Milton, Public Health Consultant

Beth's portfolio includes health protection, health care public health and children's public health. She is also interested in behavioural insight, and in asset-based approaches to working with communities. Beth trained in Cheshire and Merseyside. Prior to beginning specialty training, she worked in academic public health and carried out research into social inequalities in health and children's health.

For more information, or to arrange an informal chat, please contact

Richard Holford - richard.holford@knowsley.gov.uk

Beth Milton - beth.milton@knowsley.gov.uk

Dr Sarah McNulty - sarah.mcnulty@knowsley.gov.uk