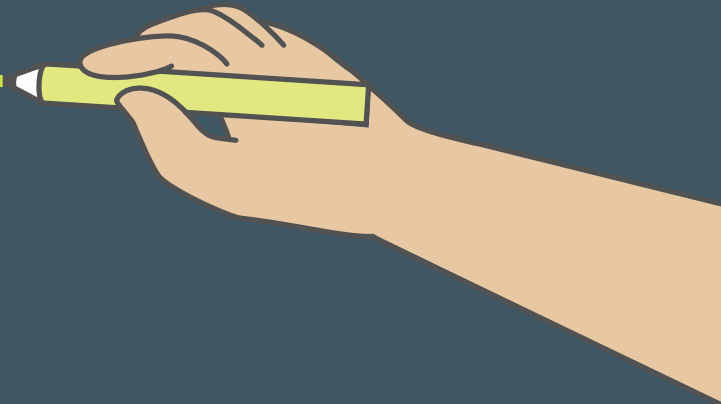


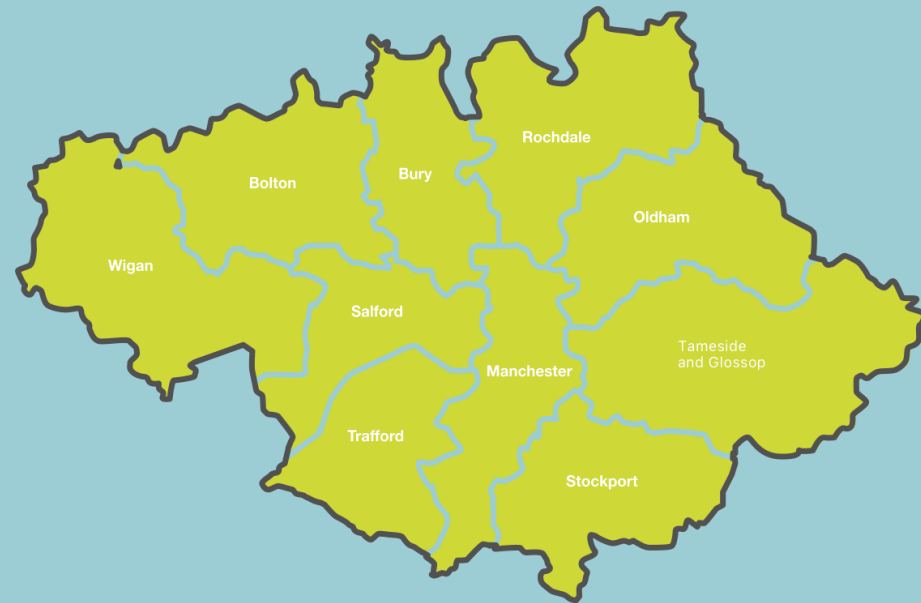
PUBLIC HEALTH TRAINING PROSPECTUS

January 2020



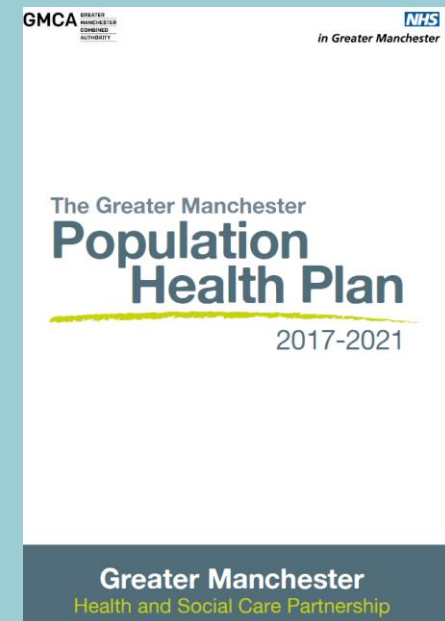
ABOUT GM HEALTH AND SOCIAL CARE PARTNERSHIP

- The Greater Manchester Health and Social Care Partnership was formed to oversee the devolution of our health and social care services. Our aim is to achieve the biggest, fastest improvement to the health and wellbeing of our region.
- The Partnership is made up of our local NHS organisations and councils, as well as people from NHS England and NHS Improvement, our emergency services, the voluntary sector, Healthwatch and others including the mayor of Greater Manchester.



GMHSCP

- The Partnership provides a unique setting to experience innovation and support the devolution process. A GM Population Health provides a range of opportunities to gain experience addressing key public health challenges.
- GMHSCP is also leading the way around sustainable development and became the first Integrated Care System to declare a climate emergency and develop a sustainability plan. Sustainable development projects are an opportunity to meet a wide range of learning outcomes reflecting the system change required to meet this unprecedented population health challenge.
- The implementation of a new Primary Care Strategy, Oral Health Plan and meeting NHS Long Term Plan targets also offer an opportunity to support regional work and national strategy.



EDUCATIONAL SUPERVISION

Darryl Quantz (Lead Trainer) is an accredited trainer and leads the GMSHCP on air quality, spatial planning and sustainable development.

Sarah Price is the interim Chief Officer and leads the population health and commissioning directorate.

Debs Thompson is a consultant in public health working with the GMHSCP Population Health Team.

Emma Hallscullin is a consultant in dental public health and can support a range of opportunities in oral health.

In addition, there a range of project managers available to allow you to tailor your registrar experience to your interests and help you achieve your learning outcomes.

LOCATION AND TRANSPORT

- GMHSCP is based at Piccadilly Place 3 across from Piccadilly station and served by rail, Metrolink and bus.
- GMHSCP encourages active travel. Showers, lockers, bike storage and a drying room facility are available at PP3.
- Car parking is also available nearby.

TRAINING OPPORTUNITIES AT GMHSCP

We are keen to welcome Specialty Registrars from ST3-ST5. Learning agreements will be developed with each trainee to stretch and challenge, support access to interest areas and meet identified learning needs.

As an Integrated Care System, GMHSCP can offer a unique training experience meeting a diverse range of learning outcomes. Opportunities include:

- Working at a GM level to develop and deliver population health programmes
- Health Care Public Health opportunities including screening and immunisation
- Commissioning projects
- Sustainable Development/Air Quality
- Dental Public Health

PREVIOUS STR PROJECTS

- Supported the design of the GM-based national pilot for primary care based transgender health services.
- Prepared a baseline report and recommendations for environmental sustainability planning.
- Undertook a health needs assessment for the GM sexual assault referral centre (SARC) to assist commissioning decisions and ensure the service meets the needs of those needing to access it.
- Analysis of service demand for the Tier 4 (inpatient) CAMHS service to assist the Partnership plan commissioning of the service as part of devolved responsibilities.
- Supported the Making Smoking History team to establish reporting requirements with NHS trusts involved in the BabyClear scheme (a service to help pregnant women to quit smoking)
- Assisted the Screening & Immunisation team with developing a plan to increase uptake of the pre-school flu vaccine, including evidence review of the use of invitations to attend for immunisation.
- Worked with the GM Skin Cancer Pathway Board to develop communications materials.
- Wrote a health inequalities strategy for screening & immunisation programmes across Greater Manchester

POTENTIAL PROJECTS

- Support the delivery of the Integrated Care System Sustainable Development Management Plan
- Implementation of the Primary Care Strategy which includes place based delivery of prevention programmes and a focus on NHS Long Term Plan commitments
- Support primary care providers development including quality improvement of clinical services
- Support GM delivery of the 5 Year Plan for the Environment and Clean Air initiatives
- Support commissioning transformation of dental services to vulnerable patient groups
- Support delivery of GM Population Health Plan including tobacco reduction, alcohol, sexual health, etc.
- Support the Screening and Immunisation team to reduce inequalities and participation across all programmes

VALUES

- All registrars will be regarded as a full member of the GMHSCP. We want to collaboratively foster and build a supportive work environment that takes into account both the challenges of our public health work and home life.
- We will work with the registrar to promote agile working opportunities and support technology for communications.
- We welcome ideas to improve the registrar experience and build our training site.

CONTACT DETAILS

For further information about public health training at the GMHSCP, please contact:

Darryl Quantz

Consultant in Public Health (Lead Trainer)

GMHSCP

Piccadilly Place 3

Manchester M1 3BN

Tel: **07799 846725**

Email: darryl.quantz@nhs.net