

What?

- 2MP +5AP = 4CEX + 3CBD
 - Abdominal pain
 - Chest pain
 - SOB
 - Mental Health
 - Head Injury
- 5 PP = 5 DOPS
- 1 ACAT EM (covering 5 AP)
- 1 MSF per year (or 2)
- 1 Audit
- Plus more
- 9 more AP = reflection, e-learning, teaching observation, audit or ACAT EM
- 1/3 of CC to level 2
- Exams
- ALS, APLS, etc.
- Safeguarding children
- elearning modules
- 13 assessments by a consultant
- Logbook of ~800 patients seen

Checklist



Health Education North West

Health Education North West – ACCS ACRP CHECKLIST CT1 2014
 CT1 Doctors (starting August 2014 onwards)
 All evidence needs to be uploaded to the e-portfolio prior to ARCP date
 ACCS Curriculum <http://www.rcoa.ac.uk/system/files/TRG-CU-ACCS2012.pdf>

Item	Requirement	Y/N	Comments
Structured Training Report	1 per placement		
Common Competencies CC 1–25	Assessed and signed off to Level 2 descriptors in 50% (min 12)		
EMERGENCY MEDICINE			
Core Major Presentations CMP 1-6	Summative assessment by a consultant using CbD or MiniCEX in at least 2		
Core Acute Presentations CAP 1-38	Summative assessment by a consultant using CbD or MiniCex in 5: - CAP1 Abdominal Pain - CAP6 Breathlessness - CAP7 Chest pain - CAP18 Head Injury - CAP30 Mental Health Formative Assessments in at least 5 further using Mini-CEX, CbD or ACAT (EM). 10 Further covered by a combination of e-learning, reflective entries, teaching, audit assessments or additional WBPAs.		
Core Practical Procedures	DOPS in each of the following 5 domains - Airway Protection - Reduction of Dislocation/Fracture - Wound Management - Trauma Primary Survey - Any 1 Other Procedure		
ACUTE MEDICINE			
Core Major Presentations CMP 1-6	Formative assessment by a consultant in at least 2.		
Core Acute Presentations CAP 1-38	Formative assessments in at least 10 using Mini-CEX, CbD or ACAT (GIM) 10 Further covered by a combination of e-learning, reflective entries, teaching, audit assessments or additional WBPAs.		
Core Practical Procedures	5 DOPS.		

We are the Local Education and Training Board for the North West

Developing people
for health and
healthcare

www.nw.hee.nhs.uk



Health Education North West

Minimum number of individual WPBA assessment in each part of the rotation

Speciality	Mini-CEX	DOPS	CbD	ACAT
Acute Medicine	3	5	3	3
Emergency Medicine	4	5	3	1

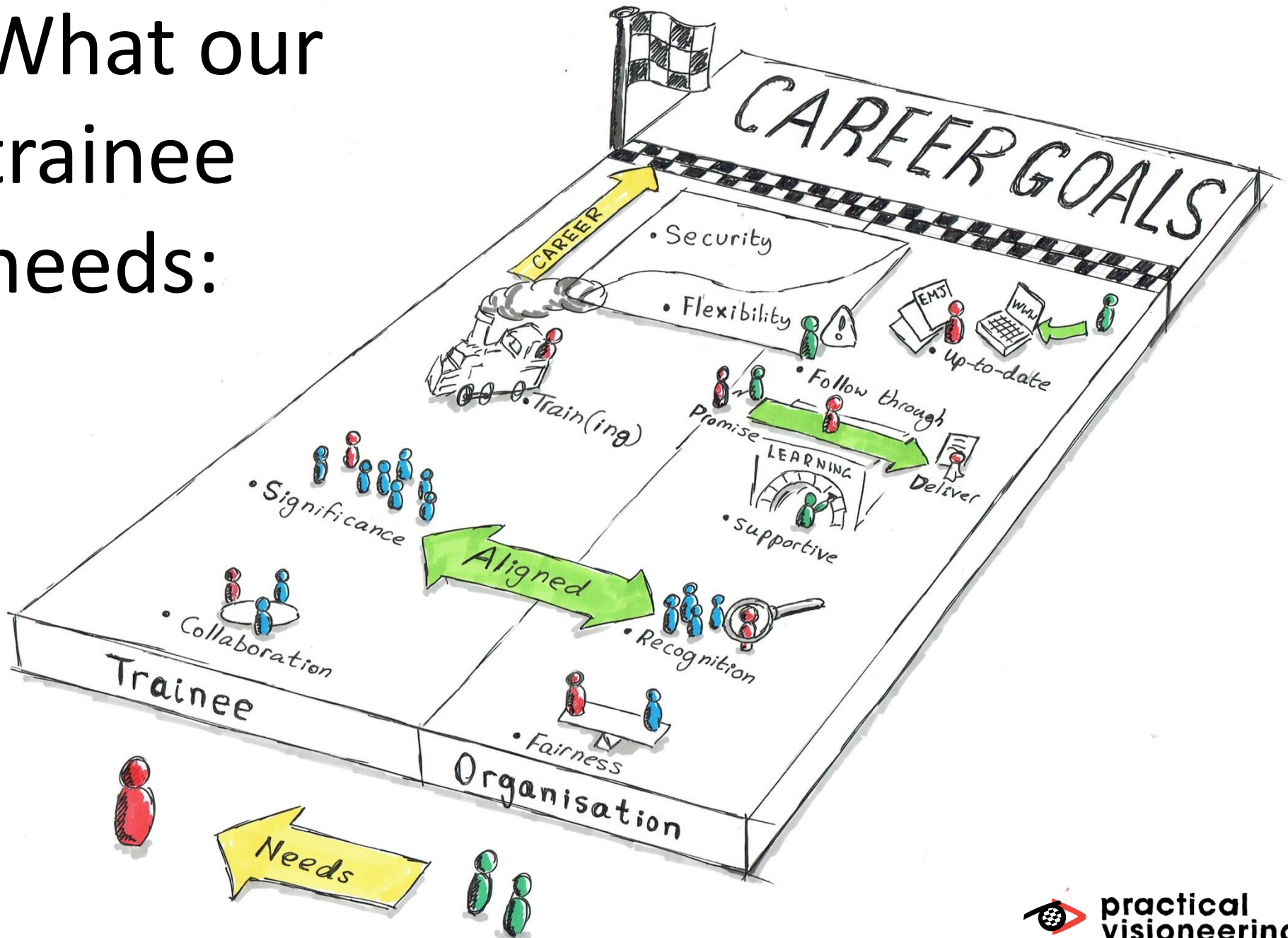
Item	Requirement	Y/N	Comments
Form R	Current Form R to be submitted to HENW		
CV	Updated CV uploaded to personal library.		
MSF	1 per placement (min of 12 raters per MSF)		
CPD Summary	CPD Summary available in Certificates and Exams or personal library section.		
Teaching Observation	1 teaching observation per year of training.		
Patient Surgery	One patient survey to be completed during the 2 years		
Declarations and Agreements	Ensure all declarations and agreements are sign off		
Life Support	Holds valid ALS provider – validated		
Clinical Governance Activity	Minimum of 1 x audit per year – evidenced via audit assessment tool		
Safeguarding Children	Holds valid Level 1 and 2 certificate		
E-learning modules	30 from eLfh platform		
Experience *these are indicative numbers and a judgement on these numbers needs to be made at ARCP.	800 cases seen in EM – upload evidence of numbers. Do not include patient identifiable data. A number from the departmental records will suffice.		
Attendance at regional teaching	Evidence of 80% attendance regional ACCS training		
GMC Survey	Evidence of attendance at Health Education North West CT1 Simulation Course		
Sick Leave	Evidence of completion in certificates and agreements or upload to personal library.		
Complaints, Critical Incidents and SUIs	Full declaration of sick leave in previous 12 months, detailed on Form R		
	Any involvement recorded in STR and Form R with actions taken and associated reflective summary available.		

We are the Local Education and Training Board for the North West

Developing people
for health and
healthcare

www.nw.hee.nhs.uk

What our trainee needs:



S

STRUCTURED TRAINERS REPORT

S

1 /2 Shock
or other Major presentation

T

2/2 Trauma assessment
or other Major presentation

ICEX

5 mandatory minicex

CAP1,6,7,18 &30

P

5 Practical procedures

A

ACAT

I

MSF

C

Common competency mapping

R

reflection

E

E learning

CIOUS

Complaints, untowards incidents and
shown resolution

A

ALS validation

L

Life support courses

ATLS or APLS

L

Life support course

other

|

In region sim course covering maj
presentation eg anaphylaxis

A

Audit

|

Or Improvement project

0

Observed teaching

D

Declaration sign off

L

Level 1 safeguarding

R

Revalidation Form

I

Indicative numbers of cases seen

~800

F

Further mapping of core
presentations

G

GMC survey

I

Illness leave

P

Patient Survey

U

Updated CV

COUNTDOWN

- S
- P
- R
- C
- L
- F
- R
- G
- L
- S
- T
- C
- X
- P
- L
- D
- C
- S

- U
- E
- A
- I
- A
- I
- I
- I
- E
- I
- A
- I
- O
- I
- O
- U



Argall.jon@gmail.com

07815 295087